



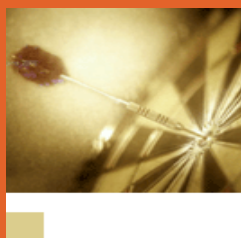
# PRODUCT SHEET

Architects of the eBusiness World  
Quality web and mobile solutions

Product: eLogbook

CMO Global mobile products can operate on the following platforms:

- ✓ Pocket PC
- ✓ Palm



## Your Product Sheet:

If you would prefer to receive your product sheet via email, please contact:  
[publications@cmoglobal.com](mailto:publications@cmoglobal.com)

[www.cmoglobal.com](http://www.cmoglobal.com)

VISIT OUR WEBSITE FOR OTHER PRODUCT SHEETS

For further information, please contact:

James Cotton  
eBusiness Director

p: +61 (0) 3 9822 9918  
e: [james.cotton@cmoglobal.com](mailto:james.cotton@cmoglobal.com)  
w: [www.cmoglobal.com](http://www.cmoglobal.com)

## CMO eLogbook!

### Automated Surgical Audit and Management Tool

*Are you exposing yourself to risk by not capturing all the information you should be?*

*Is significant time spent deciphering and re-entering handwritten patient admission notes?*

*Can you efficiently and effectively analyse data and report on the key issues?*

*Is the patient admission data being effectively used to drive additional business and system processes such as financing?*

If your surgical practice is facing any of these issues, CMO have a solution – eLogbook...



eLogbook is a Personal Digital Assistant (PDA) and Desktop system enabling Surgeons to collect the Royal Australasian College of Surgeons endorsed 'expanded data set' via a simple and controlled data capture interface. Not only can the system be made available to staff via the web on Desktops, the data collection system can also sit in the pocket of consultants and surgical registrars' in the form of a PDA to facilitate palm-of-the-hand data entry in the operating theatre.

#### Features:

- ✓ Can be adapted to any area of surgical practice
- ✓ Patient Search and filter facility allowing existing patients and their admission history to be accessed.
- ✓ Simple navigation and data collection to support the 'expanded data set' entry process by incorporating views, modifiable pick lists, and check boxes where possible. Even allows diagrams to be hand drawn!
- ✓ Records audio notes to associate with particular data elements (eg doctor can verbally record presenting problem, complications etc directly onto the PDA). This can then be flagged for later transcription into the patient admission report via the desktop application.
- ✓ Powerful data analysis and reporting includes audit reports, complication reports, morbidity and mortality reports visible by hospital or consultant etc.
- ✓ Produces Discharge Letters incorporating consultant's own details (i.e. ABN Number, Address, logo etc)
- ✓ Exportable data set via XML could be integrated with other systems by associating patient record, diagnosis, complications and other relevant values.

#### Benefits:

- ✓ All patient admission data is initially captured electronically on the PDA or desktop application reducing the need for double entry from paper based forms
- ✓ Powerful reports can be created on clinical data including performance reports to increase the quality of healthcare and thus realising benefits beyond the audit system capability.
- ✓ Product support by phone and email 365 x 24 x 7